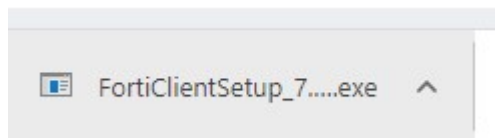


Installation and configuration of the FortiClient to connect to the DRFZ after the introduction of EMS

1. **Download and installation** – The current version (e.g. 7.x.x) of the new ZTNA FortiClient must first be downloaded and installed. The software is provided by IT at the following link: <https://vpn-ems.drfz.de:10443/installers/Default/Client-7.0.11/>



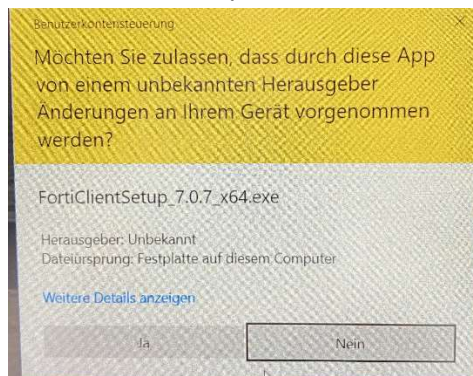
2. **Execution of the installer** – Clicking on the marked file starts the download automatically. As soon as this is completed, the installation can be started by clicking on the downloaded *.exe file.



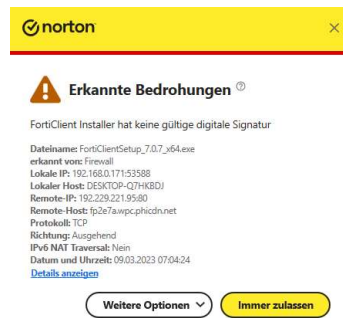
3. **Microsoft Defender Smart Screen warning message** – When running the setup file, on some systems the Microsoft Defender SmartScreen may display a warning message. The installation can be continued by clicking on 'More information' and selecting 'Run anyway'.



4. **Allow** - If necessary, confirm the execution of the installer with 'Yes'.



5. **Antivirus program** – Some antivirus programs also issue messages when trying to install the FortiClient. These must also be confirmed.

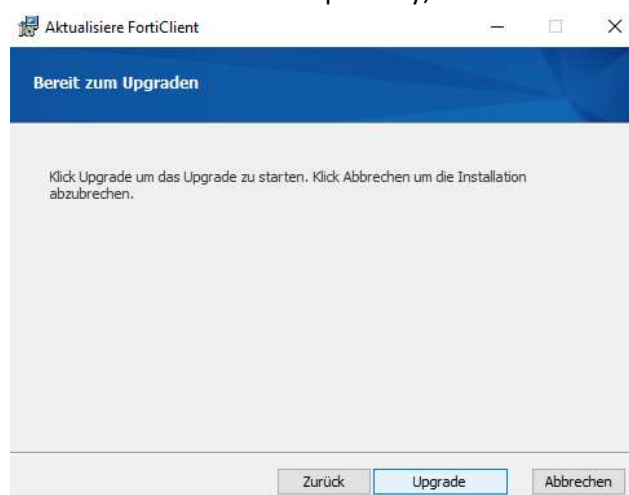


Ach

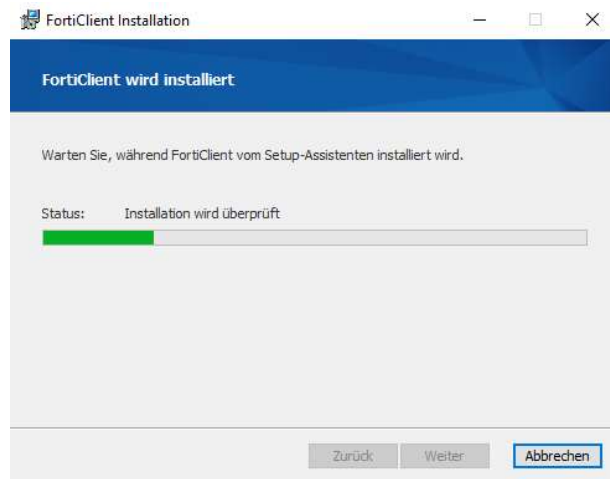
6. **FortiClient installation setup assistant** – After confirmation of the message from Defender SmartScreen and, if applicable, local antivirus program, the installation wizard starts. The license agreements must be accepted at the bottom left in order to continue with the installation via 'Next'.



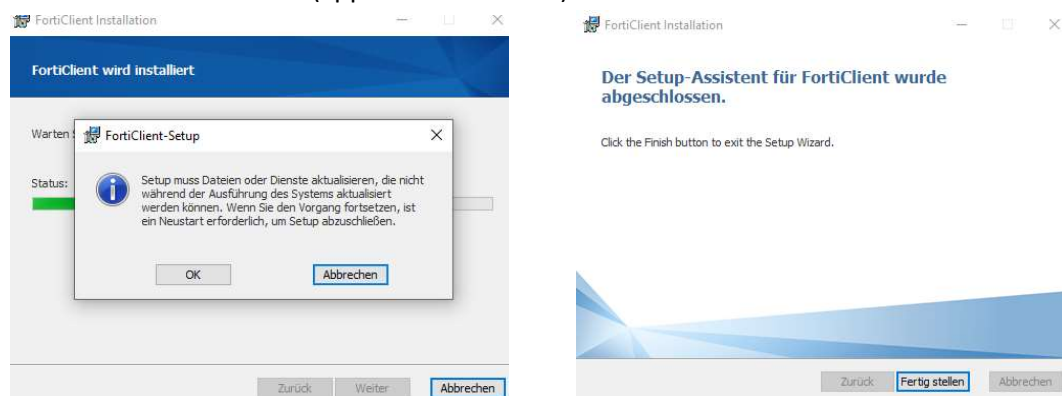
7. **If necessary, upgrade an existing client** – If an instance of FortiClient is still installed, it does not have to be uninstalled separately, but can be easily upgraded during the installation process.



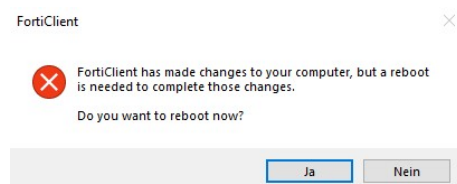
8. **Installation process** – The installation or upgrade will now run.



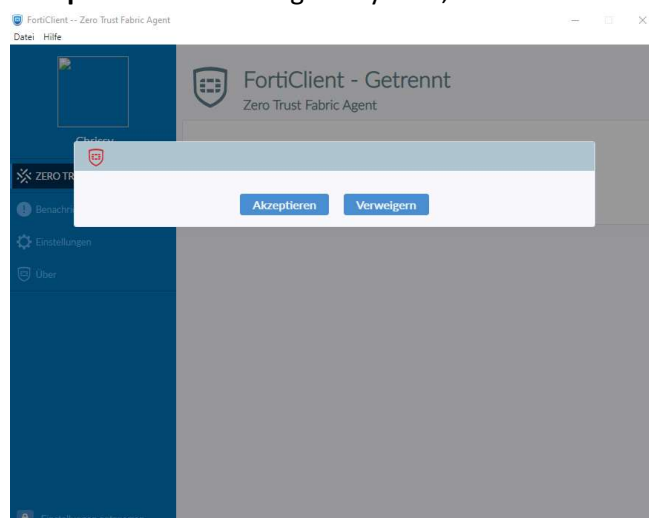
9. **Restart notice** – To complete the installation, a restart must be approved. The installation process can then take some time (approx. 2-3 minutes).



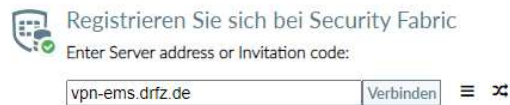
10. **Reboot** – After completing the installation, you will be prompted to restart the system.



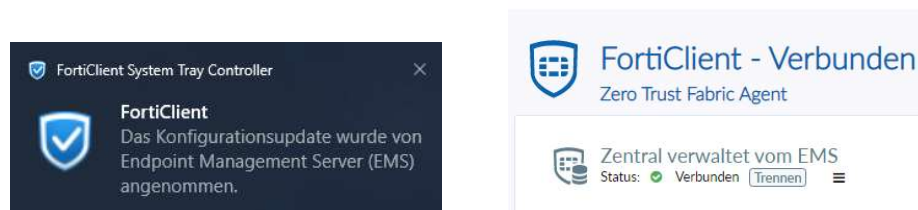
11. **Accept** – After restarting the system, the new FortiClient opens and must be accepted.



12. **Server** – If the server is not pre-filled and automatically connected, enter 'vpn-ems.drfz.de' here. The connection is established with this server. If necessary, click 'Connect'.



13. **Configuration update** – When connecting to the server, a message appears that the configuration update was accepted by the EMS. The connection is now established.



14. **VPN** – Under remote access, you can log in to the VPN as usual (username, password and token).



15. **Connected** – As soon as the connection has been established, a corresponding message appears and the window closes.



16. **FortiClient** – The FortiClient can be found in the taskbar and can be opened by double-clicking on the icon.

